

Harrods Court – 122 sq.m.

Knightsbridge, SW3

£2.5m



- A spacious, ground floor two bedroom apartment with very large courtyard garden in a concierge development completed last year
- Quietly located in the centre of Knightsbridge, Harrods Court benefits from 24hr concierge portorage and security
- Entrance Hall, Kitchen, Reception/Dining Room, Master Bedroom with En-suite Bathroom, Bedroom 2, Shower Room, Garden, One Underground Car Parking Space, contents available by separate negotiation
- Leasehold, 999 years, plus a Share of the Freehold

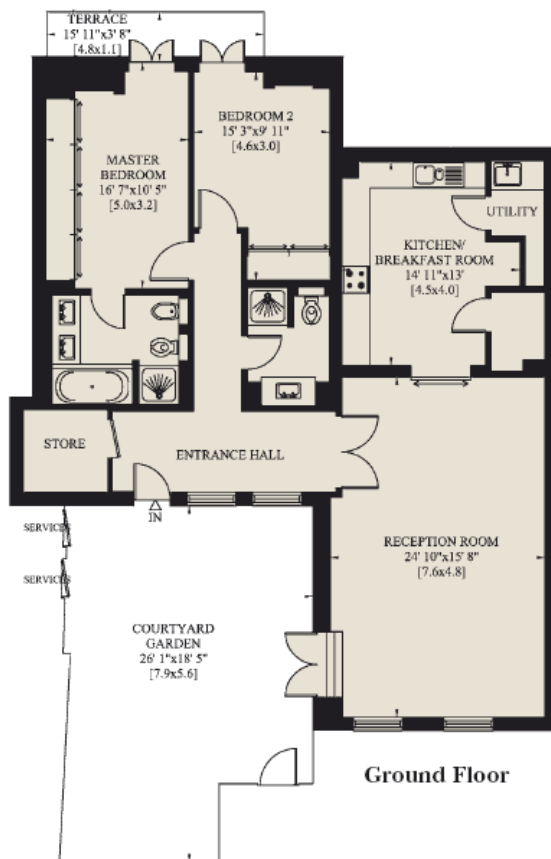
Arbitrage – Real Estate investments in London



Arbitrage – Real Estate investments in London

tel. + 44 7803 921934 or + 44 7768 142792; email: info@arbitragegroup.co.uk
web: www.arbitragegroup.co.uk

Gross Internal Area:
122 sq. metres
1,313 sq. feet



Terrace Area:
5 sq. metres
55 sq. feet

Courtyard Garden Area:
41 sq. metres
437 sq. feet

Knightsbridge

Location map



Financial details

Financial details		
		£
Purchase price		2,500,000
Additional costs		
- Lawyer fees	0.5%	12,500
- Stamp duty (tax)	4.0%	100,000
- Agent fees	2.0%	50,000
		162,500
Total cash outlay		2,662,500
Average annual price increase in this area of London has been 15%		

Underground map



Arbitrage – Real Estate investments in London